



EDGEWORTH PUBLIC SCHOOL

NEWSLETTER TERM 3 - WEEK 3

DIARY DATES

**P&C
ZOOM MEETING**
Monday 2 August - 6pm

ZONE ATHLETICS CARNIVAL
Tuesday 3 July

**PSSA GALA DAY
SOCCER AND NETBALL**
Friday 6 August

STAGE 3 PROJECT LAUNCH
Wednesday 4 August

SRC FUNDRAISER
Wednesday 11 August

**NEWCASTLE PERMANENT
MATHS COMPETITION STAGE 3**
Wednesday 18 August

**PSSA GALA DAY
SOCCER AND NETBALL**
Friday 6 August

BOOK FAIR
Monday 23 to Friday 27 August

BOOK WEEK PARADE
Wednesday 25 August

Please note: these events are permissible under the current guidelines, we will advise if there are any changes.

Friday 30 July 2021

PRINCIPAL REPORT

Welcome back everyone to Term 3.

Can I firstly thank everyone for all your best wishes whilst I was off with my family, we still have a long journey in front of us, but your support is greatly appreciated.

This term has seen a lot of changes and challenges that as a school we have had to review, revise and implement. The Department of Education guidelines around the current NSW Covid-19 outbreak has been one of these situations and we recognise that this has caused some in our community to feel either appreciation to the school for supporting the health of our children, staff and community, while for others it has caused frustration.

I just want to address a number of points associated with our gates;

- Parents and carers can still access our school to pick up their child if sick, drop off paperwork or essentials at the office or attend meetings for learning and support - we just ask that everyone follows the NSW Department of Health Education guidelines of mask wearing, social distancing and QR code check ins.
- Access to Gates - we have recently installed an intercom/entry system on Gate 3 (main gate). This was not in response to COVID-19 or a plan to limit access, but to support student safety. We have had some younger students with additional needs that have attempted to leave our school via open gates and it's for this reason we installed this system.
- Our gates 5 & 6 (on Minmi Rd) continue to be closed as a part of our Safe Entry and Exit Management Plan. We open directly onto an extremely busy 4 lane road and as our buses are no longer stopping on Minmi Road creating a buffer, traffic now flows past our school at any point of time. We are working with council and our assets team to potentially fence this section of the road which will allow for the possibility of these gates to be reopened.
- Our end of day processes are continually reviewed and as a response to community concerns, extra staff will be employed from Monday to support our current arrangements which allow Preschool, Kindergarten and Year 1 and 2 children to be picked up from 3pm and Years 3 to 6 from 3.10pm. We understand siblings and work commitments may limit some families' ability to be here at this variation to our normal times, but please be assured staff will be supporting our students and gate supervision as normal at 3:10pm. Preschool pick up occurs from gate 1, K-2 students gate 4 and Year 3-6 gates 1 and 3.

We again ask our community to consider others, follow associated guidelines and talk to your child about where and how you will be collecting them of an afternoon. Please also remember that the Kiss and Ride zone does not permit parking of more than 2 minutes and drivers are unable to leave their car. If you believe you will need more than the permitted time, we encourage you to park further up Oakville Road. This area is patrolled by both Council Rangers and Police and is beyond our control. We are working with our assets team to potentially improve the flow of traffic in this area.

Please be assured the guidelines and our response to them will be continually reviewed.

Kind Regards
Todd Osland
Principal



EDGEWORTH PUBLIC SCHOOL

NEWSLETTER TERM 3 - WEEK 3

The Department of Education has provided the summary below that details the 4 Levels of COVID-Safe School Operations. The Hunter is currently operating under Level 2.

NSW Department of Education

COVID-Safe School Operations



Overview

Guidance on mask wearing

Level	Overview	Guidance on mask wearing
Level 1 School operating in a COVID-safe/ COVID-normal way	<ul style="list-style-type: none"> Schools can operate in a COVID-normal way Students and staff to not attend school if they have symptoms; negative COVID-19 test required prior to returning to school Parents, carers and visitors are allowed on-site QR code check-in and check-out required for all staff and visitors COVID safety plans required in line with NSW Health advice (such as large gatherings or events) Activities such as singing, chanting, choirs, bands and school performances allowed in line with broader Health settings 	<ul style="list-style-type: none"> Inter-school sport in line with community sport guidelines Community use in line with broader Health settings SRE/SEE (externally provided religion and ethics classes) operational Community Language Schools operational P&C on site Additional cleaning measures in place Further detailed guidance available on the Department's website.
Level 2 COVID-safe; restrictions on activities and non-essential visitors	As per Level 1, except: <ul style="list-style-type: none"> Non-essential visitors not allowed on-site (including parents and carers) Mask wearing recommendations Staff identified as vulnerable supported to work from home Activities such as singing, chanting, choirs, bands and school performances allowed in outdoor settings only Assemblies must have COVID-Safe practices in place and no parents/ carers are allowed 	<ul style="list-style-type: none"> Excursions within Local Government Area only, and strongly recommended to be outdoors and within walking distance Further detailed guidance available on the Department's website.
Level 3 COVID-safe; further restrictions on activities and non-essential visitors	As per Level 2, except: <ul style="list-style-type: none"> Mask wearing requirements Introduction of staggered breaks and reduced mingling of student cohorts wherever possible Activities such as singing, chanting, choirs, bands and school performances not permitted No assemblies No excursions 	<ul style="list-style-type: none"> No community use (except early childhood services and OOSH services) No uniform shops No SRE/SEE (externally provided religion and ethics classes) No Community Language School on site Further detailed guidance available on the Department's website.
Level 4 Learning from home encouraged, schools are open for families who need it	<ul style="list-style-type: none"> Families are encouraged to keep their children at home, with no student to be turned away Schools activate plans to support continuity of education for all students learning from home. 	Where students and staff are at school, Level 3 guidelines apply, except: <ul style="list-style-type: none"> No community use (except early childhood services) No canteens Further detailed guidance available on the Department's website.

CANTEEN NEWS

With the support of the school and P&C, the decision has been made that it will go cashless for a period of time, only accepting online orders. The canteen operations are supported by volunteers, many of whom are our amazing grandparents or carers of families who may be more vulnerable should an outbreak occur in the Hunter. This decision was made out of respect and support of them to ensure they can continue in this vital role, keeping both them and our students safe, with reduced contact and handling of money. Since last year over 90% of our lunch orders have continued online, so we hope this will have minimal impact. We understand there will be some disappointment to children who enjoy purchasing a treat over the counter, but these will still be available through ordering online. The decision is a temporary one and will be regularly reviewed.



Online orders can be accessed through <https://www.quickcliq.com.au/>

If you are having any difficulties setting up an account, please contact Quickcliq on 1300116637

P&C MEETING

Our Week 4 meeting will be held over zoom on Monday 2 August at 6:15pm. A link will be sent to members. If you would like to join the P&C please contact our school office.



EDGEWORTH PUBLIC SCHOOL

NEWSLETTER TERM 3 - WEEK 3

TERM 3 GOALS

PRESCHOOL

EAT A RAINBOW

Fruits and vegetables are full of fibre and all sorts of essential vitamins and minerals. But the chemicals that give fruits and vegetables their vibrant colours (called phytochemicals) have some pretty special qualities, too. And each colour has its own unique health benefits.

So 'eating a rainbow' each day means more than just getting enough fruit and veg – it's about eating a wide variety of foods, so your body gets all the essential nutrients it needs. Children are learning about the different coloured food and the benefits for our body.

KINDER TIME

To prepare our pre-schoolers for the transition to Kindergarten next year, we will have Kinder time every Wednesday. During the middle session children will participate in a structured Kindergarten lessons. This will include children rotating through a variety of literacy and numeracy activities that are used in Kindergarten. We will post photos of these experiences on Storypark.

VIRTUES EDUCATION

The virtues approach creates a safe place for children to learn and play as they develop their understanding of the character virtues. Teaching the language of the virtues works to build children's self-esteem as well as enhance and strengthen their relationships and refine their emotional intelligence.

We use the language of the virtues in our interactions with children and teach them through stories, songs and shared discussions.

Each fortnight the children are introduced to a new virtue.

Our resource pack has a card for each virtue which outlines some information and language that can support the virtue. We will share these cards on Storypark as we introduce them to the children.



EARLY STAGE 1



THEMATIC UNIT

This term, Kindergarten's thematic unit is 'Under the Sea'. Our students will be exploring and investigating different animals that live here, as well as deepening their understanding on sustainable ways we can care for our environment and keep ourselves safe. Kindergarten are learning to use factual information in their writing and will show their success through the completion of composing information reports relating to our thematic unit.

LITERACY & NUMERACY

Kindergarten's Literacy goal this term is to continue broadening their vocabulary through our vocabulary, reading and writing lessons. Each week, teacher's will introduce students to a new word that relates to our thematic unit, and students will have opportunities to use the vocabulary taught in their writing and in their discussions with their peers. Student's will be successful if they are able to communicate the meaning of the vocabulary taught and will be encouraged to tell their families about these new words. As always, we strongly encourage home reading to further support students' development of literacy at home.

In Numeracy this term, Kindergarten will be exploring various concepts such as time, position, mass and data, however, have a core focus on multiplying and dividing. Student's will be investigating even and uneven groups, adding groups of items together and learning how to share items evenly. Students engage in counting songs and games daily at school and this is also a great activity that can be practised at home.

WELLBEING

Kindergarten's well-being goal this term directly links with our Positive Behaviour for Learning focus on Respect. Teacher's explicitly model ways respect can be shown and discuss the importance on practicing respect at all times. Students are encouraged to display respectful actions to all adults and peers, and are rewarded through Class Dojo, Spotlight awards and having their peg moved to 'Awesome' plate, 'Woo Hoo' plate or 'Super star' plate when showing respect to others.



EDGEWORTH PUBLIC SCHOOL

NEWSLETTER TERM 3 - WEEK 3

STAGE 1

WELLBEING - ATTENDANCE

'Every minute in school counts'

We love having our students in our classrooms each day and we want to ensure they know that they are known, valued and cared for by all teachers on Stage 1. Regular school attendance is essential to achieve personal best. Stage 1 staff are committed to working in partnership with families to ensure students attend each day and on time. If at any time your child is required to have time off due to illness or other unforeseen circumstances, we ask you to communicate this with the school.

LITERACY - VOCAB

Stage 1 are focusing on developing student's vocabulary through specific vocabulary lessons. Our aim is to encourage our students to consistently use a broader range of language to assist in improving skills within their writing. We are also looking for the implementation of higher order vocabulary to be used in our student's weekly listening tasks.

MATHEMATICS - PROBLEM SOLVING

Problem solving is an essential skill that is used across all areas of school life. This term Stage 1 is focusing on strengthening the ability of our students to think, identify, reason and justify when it comes to solving problems in Mathematics. We would like to encourage students to understand that there is often different ways to answer problems and that each way is unique, with one not better than the other, as our brains are all wired differently and our approach to learning is not always the same as others.

STAGE 2

LITERACY

Our literacy focus is vocab. Students will be explicitly taught vocab, with a focus on strengthening their understanding and use of synonyms, antonyms, definitions etc. We will measure our success by seeing these used in student writing.

WELLBEING

We will have high expectations for our children, in PBL and our thematic units, where they will show excellence in their commitment to their learning, relationships, quality work and being able to identify their 'where to next'

ATTENDANCE

We will promote school attendance and remind our children that 'Every day counts' and introduce an incentive program to encourage school attendance.

PRESCHOOL NAIDOC WEEK ACTIVITIES



STAGE 3

ATTENDANCE

Regular school attendance is essential for students to achieve quality life outcomes. Stage 3 teachers, in partnership with parents and carers, will be both promoting and celebrating the regular attendance of students. Teachers will explicitly engage students in understanding the importance of why 'every day counts' and include attendance as a key component toward earning points for our Stage 3 whole-class reward lunch.

NUMERACY

Stage 3 students will continue to strengthen their understanding in Mathematics and cultivate their skills using pre- and post- assessment data to track their areas of growth and development. Teachers will use this information to support their delivery of content by ensuring that Mathematical concepts are differentiated and targeted at each students' level of need. Students are encouraged to complete Mathematics tasks set by their classroom teacher as activities are directly linked to content explored in class and studying regularly at home is strongly linked to the consolidation of vital numeracy skills.

WELLBEING

Maintaining wellbeing means that students are, for the most part, comfortable, content, happy and healthy. It also means that when students are faced with challenges or experience unpleasant emotions, they can devise and apply strategies to overcome them. In Stage 3, students will engage in targeted lessons and journal tasks to understand what wellbeing is and how to support it within themselves and others. Additionally, students will be working on their homework project over the course of the term to track their water intake, physical activity, sleep and screen time. They will research the implications of their findings and the importance of living a balanced lifestyle and share these valuable insights with their class.



EDGEWORTH PUBLIC SCHOOL NEWSLETTER TERM 3 - WEEK 3

ATTENDANCE

"EVERY DAY COUNTS"

Attendance is the key for a successful future.

Research highlights a clear correlation between student attendance and the achievement of quality academic, socio-economic and health outcomes. This research tells us that students with an attendance rate below 90% are educationally at risk.

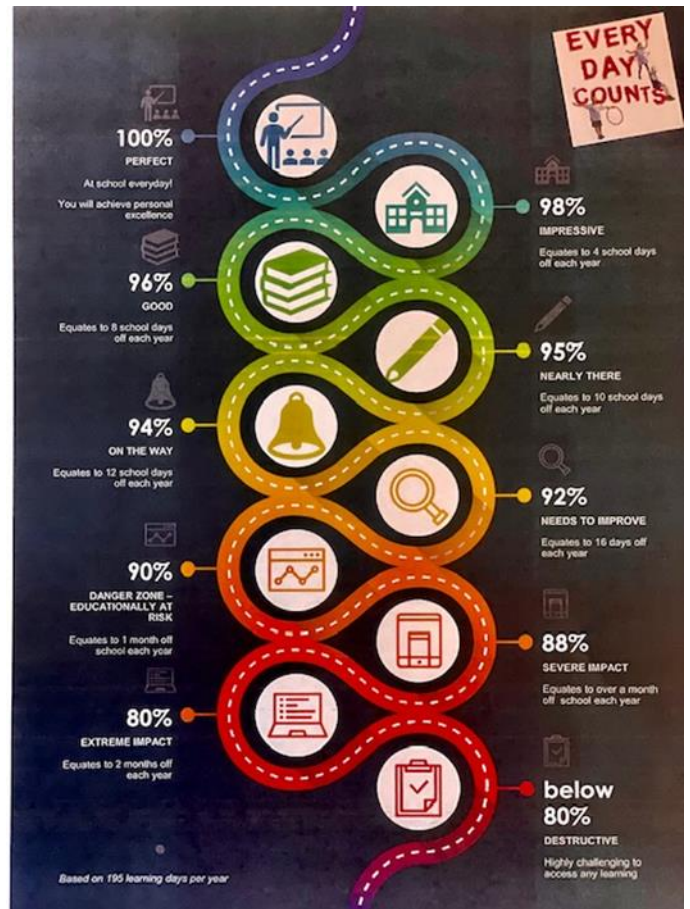
At Edgeworth Public School we want our students to be attending above 95% which is our expected target. Being late for school regularly means your child could be missing out on key information.

Let's make a difference - be at school, on time, everyday.

KINDERGARTEN 2022

Enrolment packs are now available! We have lots of fun and exciting things coming up toward the end of the year and can't wait to meet all of our future Kindy friends!

Please call our office if you would like any further information.



Welcome to Kindergarten 2022

Kindy Club
Kindy club is an opportunity for your child to form friendships, engage in a variety of hands-on learning experiences, and to become familiar with the school environment. Your child will engage in three Kindy club sessions, and will be placed in one of the following groups.
Group A: 15 Oct, 29 Oct, 12 Nov
Group B: 22 Oct, 5 Nov, 19 Nov

Important Dates

- Parent Teacher information session September 1, 4:30pm in the school hall
- Kindy Buddy Games and Picnic November 26, 9:30am-11:30am on our new school oval
- First Day of Kindergarten 2022 February 4 2022

EdgeworthPublicSchool
Email: edgeworth-p.school@det.nsw.edu.au
Cnr of Minmi and Oakville Road, Edgeworth
(02)49581831 @EdgeworthPublicSchool

