



MEET OUR STAGE 2 TEAM



Kendall McCallum
3-6 Deputy Principal Rel



Brendan Gray
S2 Assistant Principal
3/4DG Th, F



Miss Rebecca Lee
Assistant Principal
Curriculum & Instruction



Jack Cruickshank
3C



Matilda Smith
3S (M,T,W,Th)



Bree Metcalfe
3S (F)



Alyssa McBlane
3M



Naomi Davies
3/4DG (M,T,W)



Deb Chapman
4C



Brenda Wood
4W



Nikki Tregagle
4/5T

Additional Staff Supporting Stage 2
Specialist Teacher Library- Zac Morton
Specialist Teacher RFF- Rhys Wicks, Naomi Davies, Hayley Bynon
Aboriginal Education Team- Mr Scott Luschwitz
Intervention- Mrs Kathryn Maybury, Michelle Currey
AP Learning and Support- Kerry Parsons & Stephanie Walters



TERM 1 - STAFF

Updated - 14/2/24

| EXECUTIVE | |
|------------------------------|-------------------------|
| Principal rel. | Rebecca Baird |
| Deputy Principal P to 2 | Kadi Carr |
| Deputy Principal rel. 3 to 6 | Kendall McCallum |
| AP Preschool | Claire Callinan |
| AP Early Stage 1/LaST | Kerry Parsons |
| AP Stage 1 rel. | Keira Johnson |
| AP Stage 2 | Brendan Gray |
| AP Stage 3 rel. | Kristy Voysey |
| AP LaST | Steph Walters (M, T, W) |
| APCI | Bec Lee |
| APCI rel. | Ash Meagher (M, T) |

| CLASS TEACHERS | |
|----------------|---|
| Preschool | Claire Callinan (M, T, Th, F) Leanne Morgan (W) |
| KC | Shannon Walton (M) Amy Campton (T, W, Th, F) |
| KH | Jenna Hunter (M, T, W) Rachel Hancock (Th, F) |
| KM | Rhys Wicks (M, T) Ash Meagher (W,Th,F) |
| KW | Amanda Wakely |
| 1C | Jas Croad (M, T, W, Th) Rhys Wicks (F) |
| 1J | Cathy Johnson |
| 1CT | Jess Cope (M, T, W) Keira Trainor (Th, F) |
| 1W | Amielle Waters |
| 1/2JC | Grant Cooper (M, T, W) Keira Johnson (Th, F) |
| 2C | Angela Croft |
| 2K | Kane Sanders |
| 2S | Claire Stoltenberg |
| 3C | Jack Cruickshank |
| 3M | Alyssa McBlane |
| 3S | Matilda Smith (M, T, W, Th) Bree Metcalfe (F) |
| 3/4DG | Naomi Davies (M, T, W) Brendan Gray (Th, F) |
| 4C | Deb Chapman |
| 4W | Brenda Wood |
| 4/5T | Nikki Tregear |
| 5T | Bryn Trenter |
| 5JV | Kristy Voysey (M, T) Laura Johns (W, Th, F) |
| 5P | Brendan Pankhust |
| 6C | Todd Cooper |
| 6K | Kass Manolis |
| 6M | Brad McDean |

| SPECIALIST TEACHING ROLES | |
|---------------------------|---------------------------|
| Library RFF | Zac Morton (T, W, Th) |
| Library RFF | Ros Hollott (M) |
| ES1 RFF | Michelle Currey (Th) |
| ES1 RFF | Shannon Walton (T) |
| S1 RFF | Janet Pusz (W, F) |
| S1 RFF | Keira Trainor (W) |
| S1/S2 RFF | Rhys Wicks (Th) |
| S2 RFF | Naomi Davies (Th) |
| S2 RFF | Haley Bynon (Th) |
| S3 RFF | David Stone (W, Th, F) |
| Intervention | Michelle Currey (M, T, W) |
| Intervention | Kathryn Maybury (T, W) |
| EALD | Haley Bynon (T, W, F) |

| ADMINISTRATION/SASS STAFF | |
|---------------------------|-----------------------------|
| BM/SAM | Wendy Thompson |
| SAO | Theresa Blair |
| SAO | Ruth Broughton-Rouse (T, F) |
| SAO | Mel Neilsen (M, Th, F) |
| SAO | Deb Lee |
| GA | Chris Cunningham |
| GA | Craig Dorn |

| SCHOOL LEARNING SUPPORT OFFICERS | |
|----------------------------------|-----------------------------------|
| Aboriginal Ed. | Scott Luschwitz |
| Aboriginal Ed. SLSO | Joe Gordon (M, W, F) |
| Preschool | Jen Mitchell |
| SLSO | Tori Aoake |
| SLSO | Bronwyn Botham |
| SLSO | Kylie Bramley |
| SLSO | Kristen Chippendale (M, T, W, Th) |
| SLSO | Terri Clark (T, W, Th, F) |
| SLSO | Jessica Dodds |
| SLSO | Linda Gargett (W, F) |
| SLSO | Bailey Jackson (M, W, Th) |
| SLSO | Tania Jones |
| SLSO | Jo O'Connell (M, T, W) |
| SLSO | Blake Parsons (W, Th, F) |
| SLSO | Shelly Rush-Nichols (T, W, Th, F) |
| SLSO | Lisa Shields (M, T, W) |

| COUNSELLING TEAM | |
|------------------|---------------------------------|
| SPE | Ahmad Hannouf |
| Counsellor | Belinda Monticone & Chris Swain |



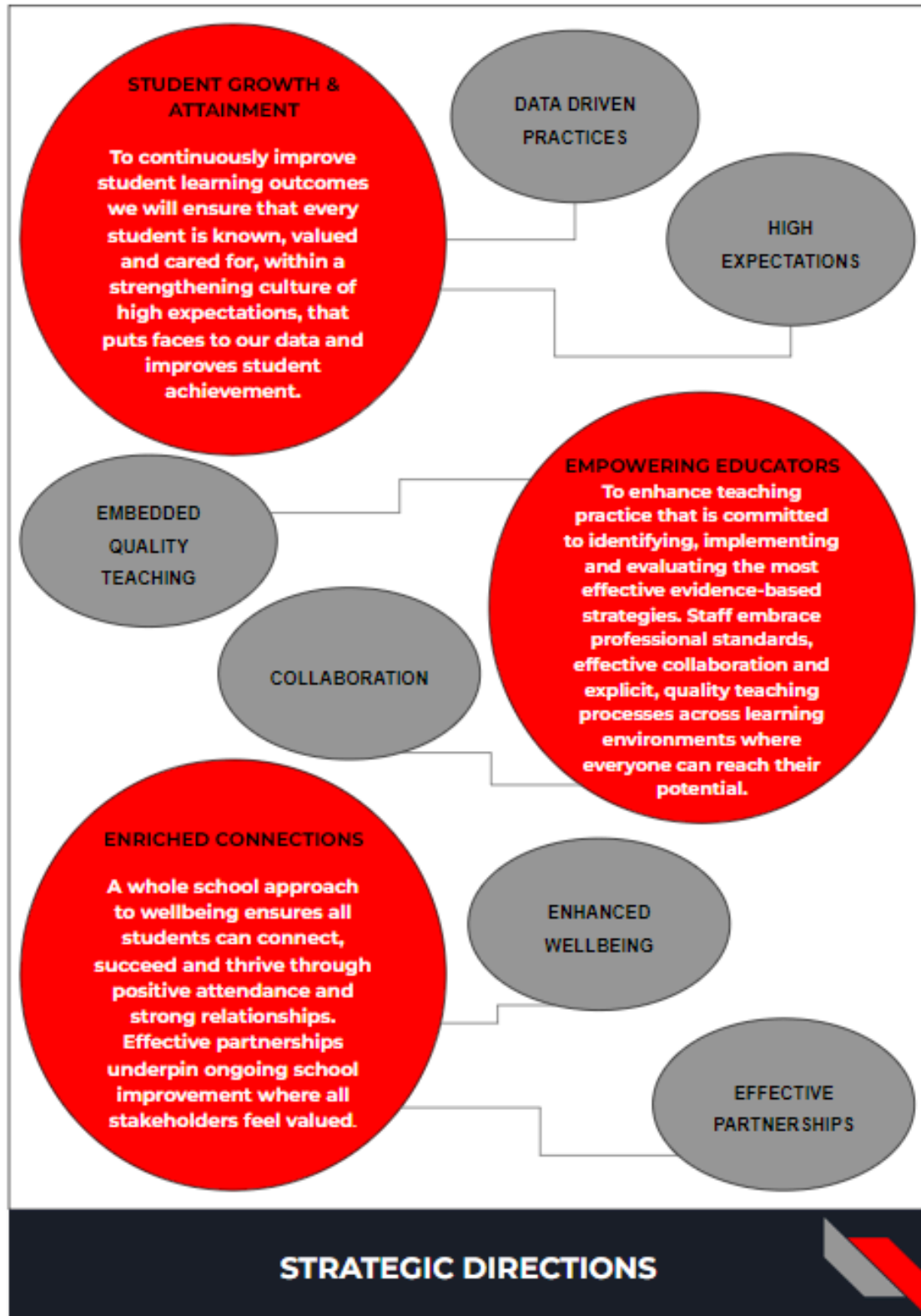
Stage 2 Information 2024

| Class | Library Day | Sport Day | Other Info |
|-------|-----------------------|---|--|
| 3M | Thursday (odd weeks) | Friday | 3M have Mrs Davies on a Thursday (even weeks) |
| 3S | Friday (odd weeks) | Friday | 3S have Mrs Metcalfe every Friday and Mr Wicks on Thursday (even weeks) |
| 3C | Friday (even weeks) | Friday | 3C have Mrs Davies on Thursdays (odd weeks) |
| 3/4DG | Wednesday (odd weeks) | Friday | Mrs Davies- Mon-Wed on odd weeks, Tue and Wed even weeks Mr Gray- Tue and Wed odd weeks, Mon-Wed even weeks |
| 4C | Friday (odd weeks) | Friday | 4C have Mrs Bynon on a Thursday (even weeks) |
| 4W | Friday (even weeks) | Friday | 4W have Mrs Bynon on Thursday (odd weeks) |
| 4/5T | Tuesday (odd weeks) | Friday (Year 4 students will go with Stage 2) | 4/5T have Mr Stone on a Thursday (even weeks) |



OUR SCHOOL PLAN

Edgeworth Public School embraces an inclusive culture of success where everyone is connected and empowered to reach their potential.





COMMUNICATION PROTOCOLS 2024

Effective communication is essential in establishing positive home school partnerships. At EPS we strive to enhance the educational experience for all students by having clear communication channels with parents and carers to best support the school community.

How we communicate with you:

Newsletter

The Newsletter is released twice a term and contains important information about school events.

Facebook

School celebrations, successes and reminders are shared publicly via Facebook.

School Bytes

Is our main portal for communication. Communication about events and excursions will be conveyed via this platform. Permission notes and payments are made through the parent portal. Student reports can also be accessed via School Bytes.

Phone Call

Teachers and office staff will call you directly for any prompt communication that needs to be shared in a timely manner.

How you can communicate with us:

School Email

Email the school with any questions or concerns with 'Att: [Teacher's name]', so it can be forwarded on. Please refrain from emailing teachers directly.

Phone call

For urgent or pressing matters, please call the office directly to assist you with your situation.

Interview/ Meeting

Formal Parent/ Teacher Interviews are held annually. However, a parent or carer can request to speak with a teacher anytime throughout the year by phoning or emailing to organise a suitable time.

Communication Etiquette

All members of the school community are expected to communicate in a respectful and polite manner.

SCHOOL CONTACT FLOWCHART

Our school values working in partnership with our community by ensuring open communication. If you need to discuss your child's learning or wellbeing, we ask that you follow the process below.

LEARNING ENQUIRIES

- Step 1: Classroom Teacher
- ↓ Step 2: Stage Assistant Principal
- ↓ Step 3: Learning Support Coordinator
- ↓ Step 3: Deputy Principal
- ↓ Step 4: Principal

WELLBEING ENQUIRIES

- Step 1: Classroom Teacher
- ↓ Step 2: Stage Assistant Principal
- ↓ Step 3: Deputy Principal
- ↓ Step 4: Principal

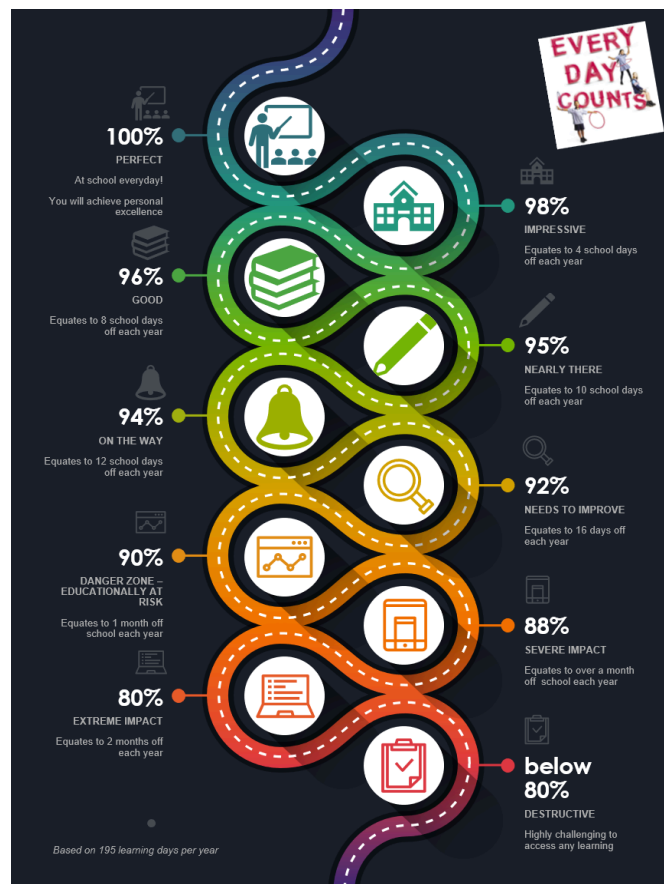


ATTENDANCE

Edgeworth Public School believes that students who are most successful academically and socially are those who attend school on a daily basis. Regular and punctual attendance maximises the opportunities for students to learn and succeed.

Whilst we recognise that there are reasons for student absence from school, the goal for attendance as stated by the Department of Education is 90% or above. This equates to no more than 8 school absences each year.

If your child is absent from school, you are able to notify the school as to the reason for their absence through the School Bytes App, replying to the SMS messaging service, phoning the school office, or supplying a written letter. We ask that you do not email the school to explain absences. Explanations for absences must be made within 7 days.



BELL TIMES

| | |
|---------------------|---------------------|
| 8:40 am - 9:10 am | Morning Supervision |
| 9:10 am - 11:10 am | Morning Session |
| 11:10 am - 11:40 am | Recess |
| 11:40 am - 1:25 pm | Middle Session |
| 1:25 pm - 1:40 pm | Eating Time |
| 1:40 pm - 2:10 pm | Lunch Play |
| 2:10 pm - 3:10 pm | Afternoon Session |

CLASS COMPOSITION

This year due to numbers there are some composite classes. Teachers follow a stage based curriculum and students will be given many opportunities throughout the year to interact with many of their peers across their stage. Cross stage classes will access their stage based curriculum and will be involved in activities with their stage based cohort.

KEY LEARNING AREAS

Students will engage in different Key Learning Areas over the duration of the year. Mathematics and English will take an explicit focus across the school. Students will have opportunities to take part in hands-on learning and engaging activities differentiated for their learning.



ASSEMBLIES

We will be having K-2 and 3-6 assemblies on alternate Wednesdays. They will start mid way through this term. This provides an opportunity for recognition of student achievement, a class performance, discussion about behavioural expectations and time to pass on any important information. It is also a wonderful opportunity for our school leaders to lead them. Each Stage will also get together weekly to hand out Spotlight Awards.

STUDENT EQUIPMENT

The student Book Pack provides all necessary equipment for student's learning including stationery, books, individual whiteboards and a subscription to an educational platform. A payment of \$50 is requested to assist in funding these essential resources. This will be sent via School Bytes so please keep an eye out. Part payments will be accepted. Should there be any issue please contact the office. Students also need to bring in a pair of plug in headphones to leave in their classrooms; these will be useful for literacy and computer activities.

LIBRARY

Students are encouraged to borrow books during their fortnightly library lessons to foster a love of reading. They will be encouraged to participate in the Premiers Reading Challenge again this year, as this will form an integral part of their homework schedule. Additionally, students can access the Council Library outside of school hours.

EXCURSIONS AND SPECIAL ACTIVITIES

Educational activities are an important part of the school program and are selected to broaden students' understanding of classroom studies. Throughout the year, students will have opportunities to attend excursions and events linked to their educational needs. More information will come during the year.

Payments can be made online via the School Bytes App.

HOME READING PROGRAM

Edgeworth Public School has a passion for all things reading. We are excited that our Home Reading Program offers an opportunity for students to promote their love of reading and be rewarded for their efforts. The aim of this initiative is to strengthen reading culture both at home and school.

Students collect 1 'Reading Dollar' for every night of reading. We do not count how many books read as this doesn't make the process fair for students who may be reading longer novels or chapter books (please record the pages read each night). We also encourage our developing readers to read the same book more than once to gain greater confidence, understanding and fluency with that text.

Lastly, students will receive a blue coloured 'reading log'. This is for parents and carers to keep at home and record what students read each night. Whenever students complete 10 nights of reading, they can bring back their reading log to their teacher to have it validated and the teacher will continue to record how many nights of reading students do across the year. In Term 4, we celebrate our incredible reading accomplishments with a 'Reading Bookshop' where students can spend their 'Reading Dollars' on exciting prizes such as Lego, books, stationery, toys, and more!

We would appreciate your assistance in keeping the log books safe as we will not be able to reprint reading logs if they are lost or damaged. We hope this inspires your child to read everyday and your support is greatly appreciated.





CLASSROOM WELLBEING PROCESS

SUPER STAR 🌟😊

WOO HOO! 🎉👄

AWESOME 😊👐

READY TO LEARN 😎

THINK ABOUT IT 🤔

TAKE A BREAK 😞

TEAM ROOM 🤬

Continuation or increase in purple behaviours
FANTASIC DAY!!

Continuation or increase in purple behaviours

Following School Values.
Demonstrating Safe and Respectful behaviour.
Offering assistance without being asked.
Cleaning up after others.
Completing quality work

Ready to learn
All students start each session on green

Yellow Behaviours:

- Disrupts the class
- Uncooperative
- Breach of a safety rule
- Interrupts the learning of others
- Damages property
- Swearing
- Verbally cruelty towards others
- Causes minor physical harm.

Yellow Consequences:

- Peg moved to yellow
- When a student's peg is moved to yellow, in class consequences may occur

Orange Behaviours:

- Continuation or increase in yellow behaviours

Orange Consequences:

- When a student's peg is moved to orange, in class consequences will occur e.g. moved away from others.

Red Behaviours:

- Continuation or increase in yellow behaviours
- High level behaviours endangering themselves or others

Red Consequences:
When a student's peg is moved to red the student will be sent to time-out in their TEAM class with a planning sheet and work to complete. Teachers will record these incidents and send a letter home and/or contact made with parent/carer.



SPOTLIGHT GOALS

SPOTLIGHTS are awarded to students for many reasons which may include: demonstrating school values, quality work, positive relationships, responsible behaviour, helping others, growth in learning etc



BRONZE AWARD

3 Spotlights in a year



SILVER AWARD

6 Spotlights in a year



GOLD AWARD

9 Spotlights in a year

=

Lunch with the Principal



Students will only receive Bronze, Silver or Gold Award after they bring in the correct amount of Spotlights and have them sighted and signed by their teacher.