

STAGE 2 - 2022

We are looking forward to a successful and engaging year and we hope that you are too.

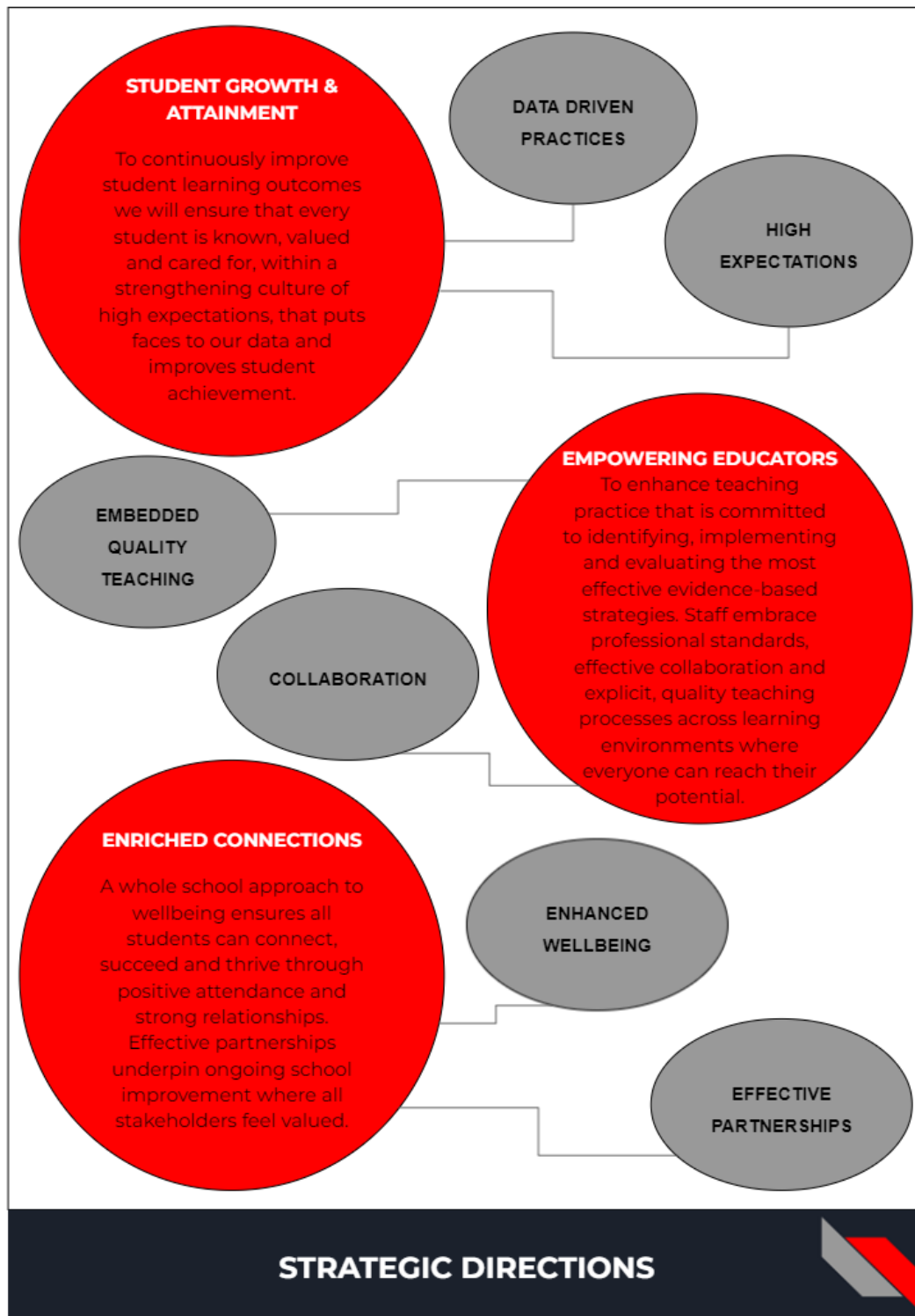
Our 2022 Stage 2 team comprises eight keen and committed teachers. They are:

CLASS /ROLE	TEACHER		CLASS /ROLE	TEACHER		CLASS /ROLE	TEACHER	
Deputy Principal 3-6	Mrs Rebecca Baird		Assistant Principal Rel. 3/4J	Mrs Keira Johnson		Assistant Principal Curriculum and Instruction	Miss Kendall McCallum	
2/3B	MR Brendan Pankhurst		3/4M	Mr Bradley McDean		3/4T	Miss Nicole Tregeagle	
3/4C	Mr Jack Cruickshank		3/4S	Miss Biljana Stojkovska		3/4L	Mrs Laura Johns (M,T,W) Mrs Anna Anlezark (Th, F)	 
OTHER STAFF SUPPORTING STAGE 3								
<p>Specialist Teacher Library - Mr Zac Morton/Claire Stoltenberg</p> <p>Specialist Teacher RFF - Mrs Haley Bynon</p> <p>Intervention Teacher – Mrs Michelle Currey</p> <p>Aboriginal Education team – Mr Scott Luschwitz and Mrs Kathryn Maybury</p> <p>School Counsellor - Mrs Amanda Rodd and Matt Russ</p>								



OUR SCHOOL PLAN





Edgeworth Public School embraces an inclusive culture of success where everyone is connected and empowered to reach their potential.





HOW TO STAY INFORMED

Edgeworth PS has many ways of communicating information with parents and the community.

<p>Download Class Dojo</p> 	<p>We use Class Dojo as a means of sending you important messages and information. Please download and install the app by searching for our school name in either the Apple App or Google Play Store and enter the invitation code provided by your child's class teacher.</p>
<p>Visit our School Website</p> 	<p>Our school website is regularly updated with the latest information, events, photos and newsletters. Find us here: http://www.edgeworth-p.schools.nsw.edu.au/</p>
<p>Follow Our Official Facebook Page</p> 	<p>Follow us at Edgeworth Public School</p>
<p>Call or Send an Email</p> 	<p>Edgeworth Public School's contact details are: Minmi Rd, Edgeworth 2285 P- 02 4958 1831 E - edgeworth-p.school@det.nsw.edu.au</p>

SCHOOL CONTACT FLOWCHART

Our school values working in partnership with our community by ensuring open communication. If you need to discuss your child's learning or wellbeing, we ask that you follow the process below.

LEARNING ENQUIRIES

- Step 1: Classroom Teacher
- ↓ Step 2: Stage Assistant Principal
- ↓ Step 3: Learning Support Coordinator
- ↓ Step 3: Deputy Principal
- ↓ Step 4: Principal

WELLBEING ENQUIRIES

- Step 1: Classroom Teacher
- ↓ Step 2: Stage Assistant Principal
- ↓ Step 3: Deputy Principal
- ↓ Step 4: Principal

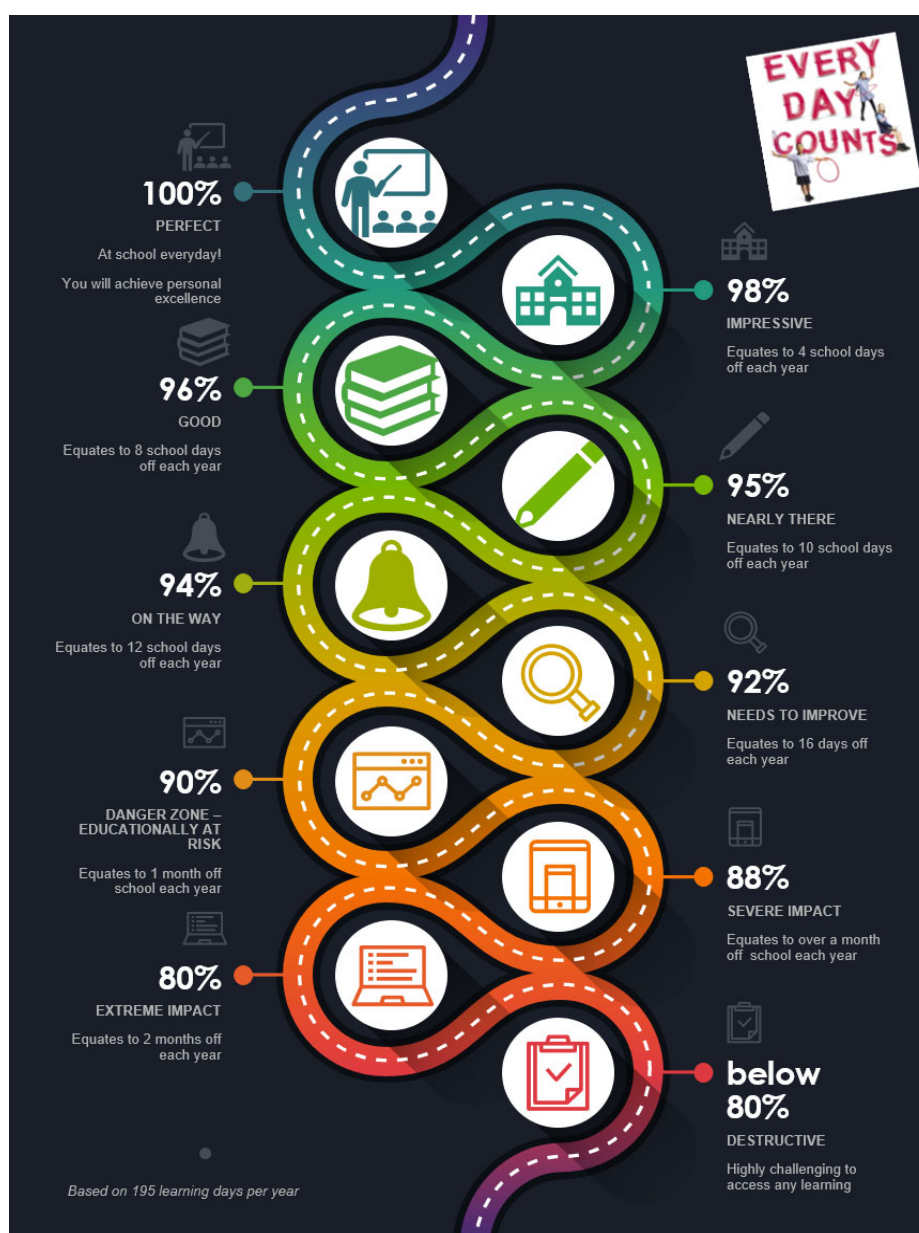


ATTENDANCE

Edgeworth Public School believes that students who are most successful academically and socially are those who attend school on a daily basis. Regular and punctual attendance maximises the opportunities for students to learn and succeed.

Whilst we recognise that there are reasons for student absence from school, the goal for 'good' attendance is 96% or above meaning no more than 8 school absences each year.

If your child is absent from school, you are able to notify the school as to the reason for their absence through the SMS messaging service, phoning the school, or supplying a written letter. We ask that you do not email the school or use DoJo to explain absences.





CLASS COMPOSITION

This year Stage 2 classes are mainly 3/4 composite classes with a 2/3 class. This is the preferred model due to a number of factors such as enrolment numbers and the physical and social requirements of the students in Stage 2. Teachers follow a stage based curriculum and students will be given many opportunities throughout the year to interact with many of their peers across their grade.

KEY LEARNING AREAS

Students will engage in six Key Learning Areas over the duration of the year. Classes will be participating in Integrated units where they can explore, create and collaborate with their peers and showcase their talents across Literacy, Science and Technology, History & Geography, Creative & Practical Arts and Personal Development and Health. Mathematics will take an explicit focus across the school. Students will have opportunities to take part in hands-on games and engaging activities differentiated for their learning.

COVID MEASURES

We adhere to the NSW Education Department guidelines with regard to restrictions and changes to our usual day to day procedures. We will endeavour to keep you up to date with changes as we are made aware of them. Please visit <https://education.nsw.gov.au/covid-19> for the latest advice.

ASSEMBLIES

Stage 2 will have a brief weekly assembly on each Friday after recess to hand out Spotlight and Stage Awards. Year 2 students from 2/3B will attend the Stage 1 assembly held at the same time.

STUDENT EQUIPMENT

The Book Pack provides all necessary equipment for student's learning including stationery, books and individual whiteboards. If students could also bring in a pair of headphones to leave in their classrooms these will be useful for literacy and computer activities. We would greatly appreciate a payment of \$50 to assist in funding these essential resources. Part payments will be accepted. Should there be any issue please consult with office staff who will be happy to accommodate.

LIBRARY

Students are encouraged to borrow books during their weekly library lessons to foster a love of reading. They will be encouraged to participate in the Premiers Reading Challenge again this year, as this will form an integral part of their homework schedule. Additionally, students can access the Council Library outside of school hours.



EXCURSIONS AND SPECIAL ACTIVITIES

Educational activities are an important part of the school program and are selected to broaden students' understanding of classroom studies. In 2022, these will include:

EVENT	DATE	EVENT	DATE
Cross Country	10 June - TBC	Year 3 Camp	TBC
Athletics Carnival	24 May	Year 4 Camp	TBC

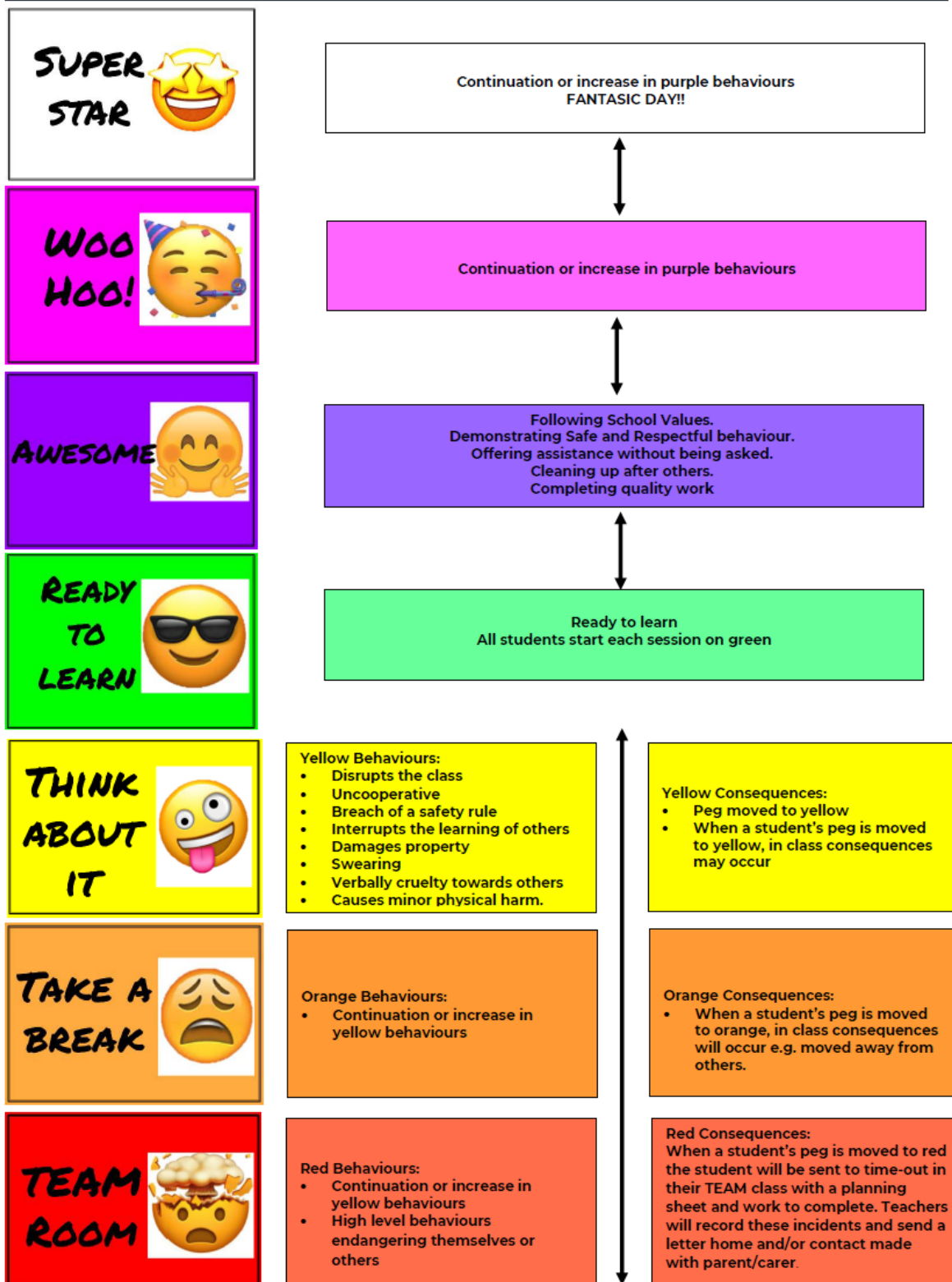
We will endeavour to provide parents with as much information on these excursions and events, and any others that come up throughout the year, as soon as we can, to assist in payments and organisation for your child to attend.

Excursions are a privilege and children must display exemplary behaviour throughout the year to be able to join their classmates on these worthwhile educational experiences. Children who do not meet the standards set by Edgeworth Public School may be unable to attend.

Payments can be made online, using the POP system (minimum \$10), which you can access through the school website. Student assistance is available if you have any concerns about expenses related to such activities. Please contact the school office for further information if needed.



CLASSROOM WELLBEING PROCESS





SPOTLIGHT GOALS

SPOTLIGHTS are awarded to students for many reasons which may include: demonstrating school values, quality work, positive relationships, responsible behaviour, helping others, growth in learning etc



BRONZE AWARD

3 Spotlights in a year



SILVER AWARD

6 Spotlights in a year

=

Star Badge

(Each Grade has a specified colour)



GOLD AWARD

9 Spotlights in a year

=

Lunch with the Principal

